

Tom Boyd
RE/MAX Crossroads
Cell: (540) 717-5959
tomboyd@remax.net

Client Full

206 Main Street St S, Culpeper, VA 22701

Active

Commercial Lease

\$700.00



Recent Change: **08/27/2019 : New Active : ->ACT**

MLS #: VACU139416
Tax ID #: NO TAX RECORD
Sub Type: Office
Waterfront: No

Leasable SQFT: 1,700
Business Use: Professional
Year Built: 1944

Location

County: Culpeper, VA School District: Culpeper County Public Schools
In City Limits: Yes

Taxes and Assessment

Zoning: C2

Commercial Lease Information

Date Available: 09/01/19 Current Use: Other, Professional Service, Vacant
Business Type: Professional Leasable SQFT: 1,700

Building Info

Construction Materials: Block, Brick
Total Loading Docks: 0
Total Levelers: 0
Total Drive In Doors: 0

Lot

Lot Acres / SQFT: 0.18a / 7,841sf

Interior Features

Interior Features: Accessibility Features: Elevator, Ramp-Main Level

Parking

Parking: On Street Parking, Parking Lot, Private 1-10 Spaces

Utilities

Utilities: Central A/C, Heating: Central, Heating Fuel: Natural Gas, Hot Water: Natural Gas, Water Source: Public, Sewer: Public Sewer

Remarks

Public: A very attractive location in dynamic historic Culpeper. An easy stroll to eating, drinking, shopping, and other services. There are currently Suite Options on both the 2nd (#203 at 700 SF or can be divided) and 3rd Floors (full width on Main at approximately 1000 SF). Among current tenants are community newspaper and professional services.

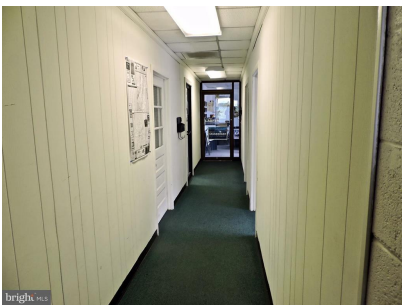
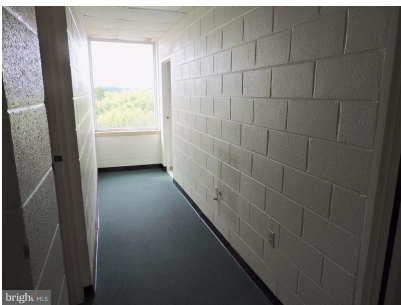
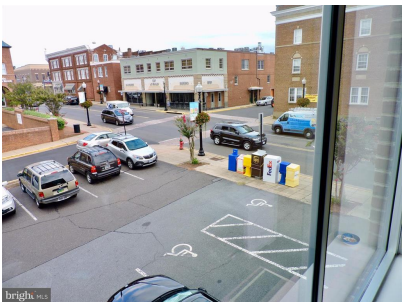
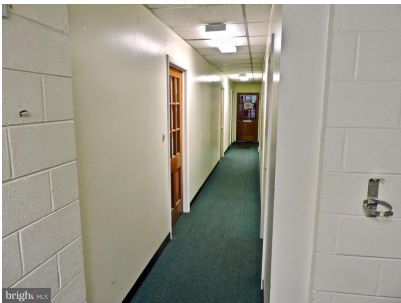
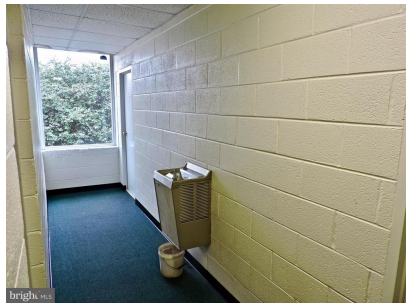
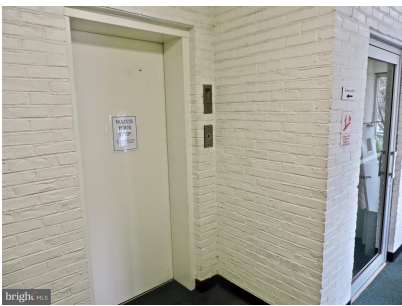
Directions

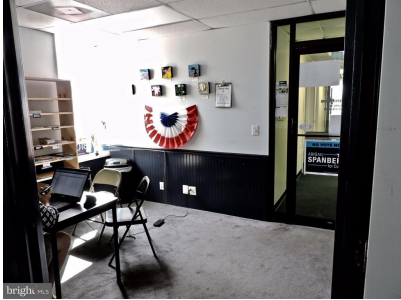
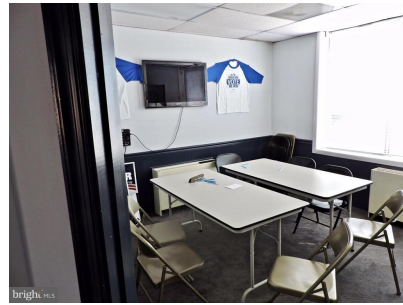
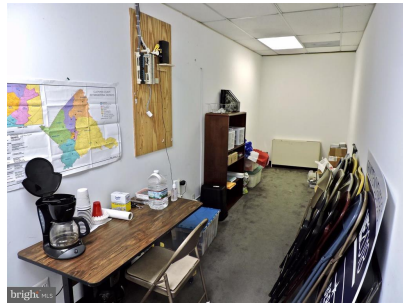
Main street, head South to 206. Gallery faces Main Street, but professional spaces entry is at rear of side with small lobby and elevator. Signs in windows

Listing Details

Original Price: \$700.00
Listing Term Begins: 08/27/2019

DOM: 3





© BRIGHT MLS - All information, regardless of source, should be verified by personal inspection by and/or with the appropriate professional(s). The information is not guaranteed. Measurements are solely for the purpose of marketing, may not be exact, and should not be relied upon for loan, valuation, or other purposes. Copyright 2019. Created: 08/29/2019 11:49 AM



Tom Boyd | RE/MAX Crossroads | tomboyd@remax.net | Ph: (540) 812-9033