

Tom Boyd
RE/MAX Crossroads
Cell: (540) 717-5959
tomboyd@remax.net

Client Full

**19026 Crossroad Pkwy, Culpeper, VA
22701**

Active

Commercial Lease

\$9.00



MLS #: 1000987163
Tax ID #: 50-X-1- -3
Association: HOA
Sub Type: Industrial
Waterfront: No

Leasable SQFT: 7,200
Price / Sq Ft: \$0.00
Business Use: Industrial, Manufacturing, Warehouse
Year Built: 2005
Property Condition: As-is condition

Location

County:	Culpeper, VA	School District:	Culpeper County Public Schools
In City Limits:	No	High School:	Eastern View
Legal Subdivision:	CANNON CROSSING	Middle/Junior School:	Floyd T. Binns
Subdiv / Neigh:	Cannon Crossing	Elementary School:	Pearl Sample
		Election District:	7

Association / Community Info

HOA: Yes
Prop Mgmt Company: Cannon Properties
Property Manager: Yes

Taxes and Assessment

Zoning: LI

Commercial Lease Information

Date Available:	12/29/18	Current Use:	Medical Offices, Office, Other, Professional Service, Telecommunication Site, Vacant
Business Type:	Industrial, Manufacturing, Warehouse	Leasable SQFT:	7,200

Building Info

Entry Location:	1st Floor	Construction Materials:	Brick
Building Total SQFT:	4,300 / Estimated		

Lot

Lot Acres / SQFT: 2.27a / 98,881sf
Fencing Y/N: No

Interior Features

Interior Features: Accessibility Features: No Stairs

Parking

Parking: Driveway Parking, Private 11+ Spaces, Asphalt Driveway

Utilities

Utilities: Wall Unit, Heating: Central, Heating Fuel: Bottled Gas/Propane, Hot Water: Electric, Water Source: Public, Sewer: Private/Community Septic Tank

Remarks

Inclusions: Parking Included In ListPrice,

Public: 7200 SF warehouse with restroom and freight doors. One sunken dock. suite. Full insulation with Space Heat. Segmented space with limited air conditioning. Adjoins nice 4400 SF admin space (separate listing) \$500/month CAM

Directions

Route 15 South to Left onto Lovers Land to Right on Crossroads Parkway to property on Right WITH SIGN

Listing Details

Original Price: \$19.50

Previous List Price:

\$19.60

Listing Term Begins: 09/26/2017

DOM:

776



Exterior (Front)



Exterior (General)



Interior (General)



Interior (General)



Interior (General)



Interior (General)



Bath



Bath



Interior (General)



Interior (General)



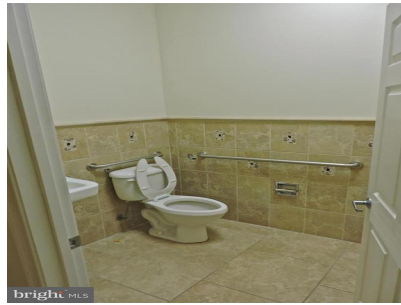
Interior (General)



Interior (General)



Interior (General)



Bath



View



View



Exterior (Rear)



Exterior (Rear)

© BRIGHT MLS - All information, regardless of source, should be verified by personal inspection by and/or with the appropriate professional(s). The information is not guaranteed. Measurements are solely for the purpose of marketing, may not be exact, and should not be relied upon for loan, valuation, or other purposes. Copyright 2019. Created: 11/10/2019 11:33 AM

