

Tom Boyd
 RE/MAX Crossroads
 Cell: (540) 717-5959
 tomboyd@remax.net

**18480 Crossroad Parkway, Culpeper, VA
 22701**

Active

Commercial Sale

\$300,000



MLS #: 1000409022 Type: Office
 Available SqFt: 1,252.00 Ownership Interest: Condominium
 Price / Sq Ft: 239.62 Lot Acres / SQFT: 2.58a / 112,385sf
 Business Type: Barber/Beauty, Medical, Professional/Office
 Tax ID #: 50-X-1- -2
 County: Culpeper, VA
 Year Built: 2004
 Property Condition: As-is condition

Taxes, Assessment, Fees Association / Community Info

Taxes / Year: \$8,012 / 2011 HOA: Yes
 Tax Assessed Value: \$1,082,700 / 2011 Condo/Coop Assoc: No

Income and Expenses

Gross Income: \$26,775
 Operating Expense: \$3,500

Building Info

Building Total SQFT: 1,252 / Estimated

Features

Parking: Driveway Parking, Off Site Parking, Off Street Parking, Garage - Front Entry, Garage - Side Entry, Private 11+ Spaces, Asphalt Driveway, Handicap Parking, Parking Space Conveys, Paved Driveway, Unassigned Parking
 Utilities: Water Source: Public, Sewer: Septic Exists

Remarks

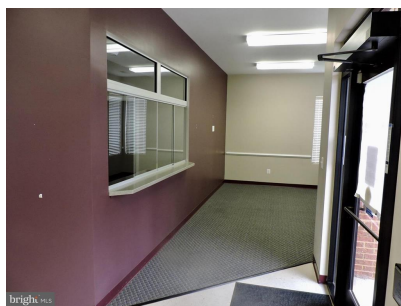
Public: A 1250 SF +/- condo in a small office park of similar upscale units. Located on the Southern quadrant of Culpeper community.. Tasteful well-maintained setting with plentiful surface parking adjacent to each unit. Easy access to all services of the Town of Culpeper. Very convenient to hospital, thus attractive to medical services. .

Listing Details

Original Price: \$300,000 Sale Type: Standard DOM: 284
 Listing Term Begins: 04/17/2018
 Inclusions: Parking Included In ListPrice, Parking Included In SalePrice



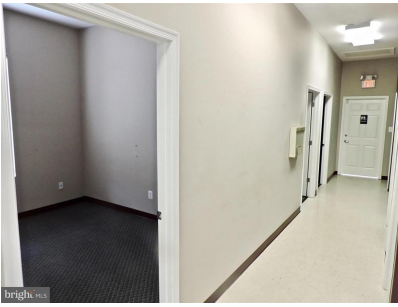
Exterior (Front)



Interior (General)



Interior (General)



Interior (General)



Interior (General)



Interior (General)



Interior (General)



Interior (General)



Interior (General)



Bath



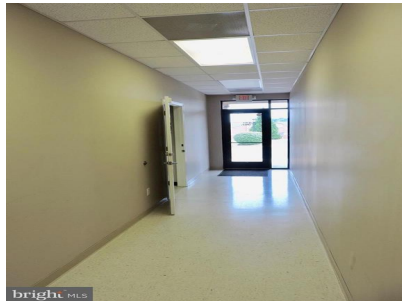
Kitchen



Interior (General)



Interior (General)



Interior (General)



Interior (General)

© BRIGHT MLS - All information, regardless of source, should be verified by personal inspection by and/or with the appropriate professional(s). The information is not guaranteed. Measurements are solely for the purpose of marketing, may not be exact, and should not be relied upon for loan, valuation, or other purposes. Copyright 2019. Created: 01/25/2019 08:00 PM